



THE ULTIMATE EMAIL
SECURITY SYSTEM FOR
THE WORLD'S MOST
DEMANDING NETWORKS.

IronPort X1050 Email Security System

OVERVIEW

As the battle to protect the email perimeter continues, two predominant trends emerge: higher mail volumes and more resource-intensive scanning. The *IronPort X1050™* is purpose-built, on the foundation of the *IronPort AsyncOS™* operating system, to provide power for today's volumes and high-performance scanning for tomorrow's threats. This unparalleled performance delivers dial-tone availability — saving hours of productivity and thousands of dollars during peak traffic times, such as damaging virus outbreaks or spam attacks.

The world's largest organizations and ISPs need a secure and easy-to-manage email security solution that protects all facets of their complex email infrastructures. The *IronPort X1050* provides IronPort's exclusive preventive filters and signature-based reactive filters, combined with content filtering and best-of-breed encryption technology, to provide the highest level of email security available today — while delivering unprecedented visibility and management tools.

FEATURES

The *IronPort X1050* provides the world's most powerful multi-layered approach to email security.

SPAM PROTECTION

IronPort® provides defense in depth against spam by providing two layers of protection — a preventive layer of reputation filters, followed by reactive filters.

IronPort Reputation Filters™ provide an outer layer of defense using *IronPort's SenderBase®* data to perform a real-time email traffic threat assessment and identify suspicious email senders.

IronPort Anti-Spam™ Filters utilize the industry's most innovative approach to threat detection, based on IronPort's unique *Context Adaptive Scanning Engine™* (CASE).

IronPort's CASE examines the complete context of a message, including: "What" content the message contains, "How" the message is constructed, "Who" is sending the message, and "Where" the call to action of the message takes you. By combining these elements, *IronPort Anti-Spam* stops the broadest range of threats with industry-leading accuracy.

The IronPort Spam Quarantine™ is a self-service end-user solution, with an easy to use Web or email-based interface. This feature provides end-users with their own safe holding area for spam messages and integrates seamlessly with existing directory and mail systems.



FEATURES (CONTINUED)

VIRUS PROTECTION

IronPort Virus Outbreak Filters™ identify and quarantine viruses hours before traditional virus signatures are available.

Sophos Anti-Virus technology provides a fully integrated layer of virus protection with the highest-performance virus scanning technology in the industry.

McAfee Anti-Virus technology is fully integrated to provide an additional layer of virus protection either as an alternative to, or in conjunction with, Sophos for maximum virus security.

POLICY ENFORCEMENT

Next Generation Compliance Filters enable customers to address HIPAA, GLB, SOX and other regulatory compliance requirements. IronPort's easily deployed solution defends organizations against outbound content compliance violations.

IronPort Email Encryption gives administrators the ability to secure confidential data and comply with partner, customer or regulatory requirements. *IronPort PXE™* technology enables simple, secure communication from the gateway to any recipient inbox — while TLS, PGP and S/MIME technology provide security between partner email gateways.

Compliance Quarantine provides delegated access to emails that have been flagged by the content scanning engine.

EMAIL AUTHENTICATION

DomainKeys Signing digitally signs outgoing messages to establish and protect your identity with email receivers on the Internet.

IronPort Bounce Verification™ tags messages with a digital watermark to provide filtering of bounce attacks at the network edge.

Directory Harvest Attack Prevention tracks spammers who send to invalid recipients and blocks attempts to steal email directory information.

ENTERPRISE MANAGEMENT TOOLS

Email Security Manager™ is a powerful, graphical management tool that provides fingertip control to manage all email security, including preventive and reactive anti-spam and anti-virus filters, email encryption, compliance and data leakage prevention.

Intuitive GUI enables unprecedented visibility and control. The integrated Web-based user interface enables real-time and historical reporting along with the ability to configure policies, search, and selectively release quarantined messages.

Centralized Management eliminates a single point of failure with superior “peer to peer” architecture and makes managing multi-box installations of IronPort email security appliances simple. The ability to manage configuration at multiple levels allows organizations to manage globally while complying with local policies.

Mail Flow Central™ allows you to find the status of any message that has traversed your infrastructure. With this centralized reporting tool, administrators and support staff can quickly answer end-user inquiries such as, “What happened to my email?”.

Email Security Monitor™ delivers real-time threat monitoring and reporting. This technology tracks every system connecting to your IronPort appliance to identify Internet threats (such as spam, viruses and denial-of-service attacks), monitor internal user trends and highlight compliance violations.



FEATURES (CONTINUED)

SNMP Enterprise MIB facilitates hands-off monitoring and alerting for all system parameters including hardware, security, performance and availability.

IRONPORT MTA PLATFORM

AsyncOS, IronPort's proprietary operating system, was built from the ground up to address the requirements of modern email gate-

ways and to position customers for the future of SMTP. The *IronPort X1050* supports thousands of simultaneous incoming and outgoing connections—ensuring that your email infrastructure is never overwhelmed, even during the largest outbreaks or attacks.

BENEFITS

Reporting Insight Proves ROI The *IronPort X1050* offers very sophisticated management, monitoring and reporting tools designed to satisfy the large global enterprises and ISPs that make up IronPort's customer base. Each appliance has a unique reporting system, providing both a real-time and historical look at mail flowing through your email infrastructure. IronPort provides system administrators with the necessary information to make critical security decisions and demonstrate Return On Investment (ROI).

Reduced TCO The *IronPort MTA* platform enables massive reduction in Total Cost of Ownership (TCO) by consolidating email operations and security into a single platform. Self-managing security services provide the lowest maintenance solution in the industry with minimal configuration requirements.

Increased End-User Productivity By securing the network at the gateway level, the *IronPort X1050* acts as a "shock absorber," in front of the groupware server(s). This ensures that end-users are not bogged down by spam, viruses, and other threats. Unlike other solutions, IronPort security services do not rely on end-users to "train" the system. Instead, high accuracy is maintained through continuous and automatic rule updates.

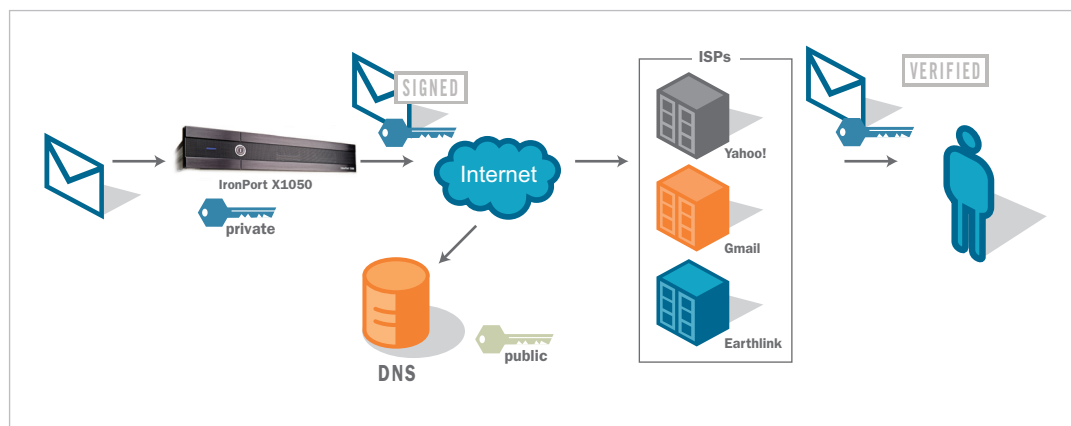
Improved Administrative Efficiency The *IronPort Reputation Filtering* system was the first in the industry and remains the most sophisticated. In its default settings, the system will block over 80 percent of incoming mail at the connection level. By eliminating these unwanted messages, organizations save bandwidth (the message is never accepted) and system resources. CPU-intensive spam and virus filters are used only when needed, and rate limiting is a very effective defense against "hit and run" spam attacks or denial-of-service attacks.

Minimized Downtime The comprehensive *IronPort X1050* solution ensures the availability and security of your email infrastructure. IronPort offers a variety of security applications for spam and virus filtering, content scanning, and policy enforcement. Together these features reduce the risk and potential downtime posed by security threats.



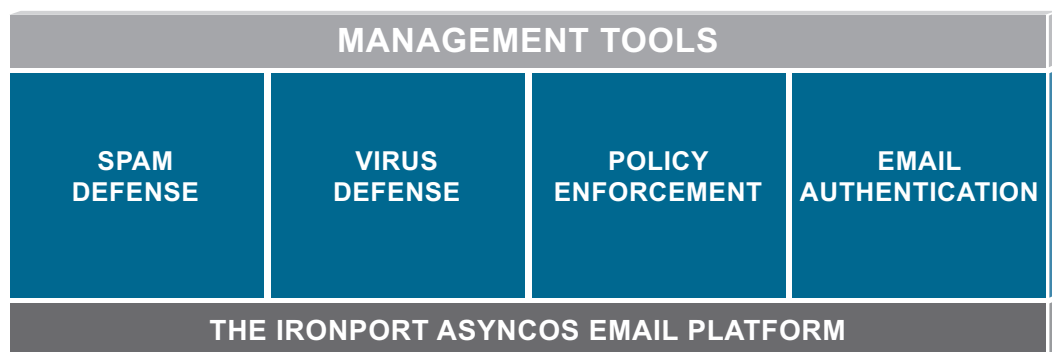
FIGURE 1.

The *IronPort X1050* enables DomainKeys; a cryptographic-based means to establish the true identity of email senders.



Power at the Perimeter:

The *IronPort X1050* provides multi-layered security on a single appliance by combining IronPort's revolutionary technology with additional market leading anti-spam and anti-virus solutions.



SPECS

CHASSIS/PROCESSOR

Form Factor	19" Rack-Mountable, 2U rack height
Dimensions	3.5" (h) x 19" (w) x 29" (d)
CPU	Two Intel Multi-Core Processors
Power Supplies	Hot-plug redundant, 750 watts, 100/240 volts

STORAGE

RAID	RAID 1+0 configuration; Dual channel hardware with battery-backed cache
Drives	Four hot-swappable, 146 GB Serial attached SCSI
Capacity	70 GB queue capacity, 110 GB discretionary capacity (reporting data, logs, configuration, archives)

CONNECTIVITY

Ethernet	Two Broadcom Gigabit BaseT and One Intel 10/100 BaseT Ethernet ports Two-port fiber-optic NIC
Serial	One RS-232 (DB-9) Serial Port

MAIL OPERATIONS

Mail Protocols	SMTP, ESMTP, Secure SMTP over TLS
DNS	Internal resolver/cache; Can resolve using local DNS or Internet DNS servers
LDAP	Integrates with Active Directory, Notes, Domino and OpenLDAP servers.

INTERFACES/CONFIGURATION

Web Interface	Accessible by HTTP or HTTPS
Command Line Interface	Accessible via SSH or Telnet; Configuration Wizard or command-based
File Transfer	SCP or FTP
Programmatic Monitoring	XML over HTTP(S)
Configuration Files	XML-based configuration files archived or transferred to cluster

CRYPTOGRAPHIC ALGORITHMS

TLS (Encrypted SMTP)	56-bit DES, 168-bit 3DES, 128-bit RC4, 128-bit AES and 256-bit-AES
DomainKeys Signing	512, 768, 1024, 1536 and 2048-bit RSA
SSH for System Management	768 and 1024-bit RSA
HTTPS for System Management	RC4-SHA and RC4-MD5

PRODUCT LINE

SIZING UP YOUR EMAIL SECURITY SOLUTION

IronPort Systems provides industry leading email security products for organizations ranging from small businesses to the Global 2000.

IronPort X1050	Built to meet the needs of the most demanding networks in the world.
IronPort C650	Designed for large enterprises and service providers.
IronPort C350	Suggested for medium to large enterprises.
IronPort C350D	Recommended for any company with unique outbound email communication needs.
IronPort C150	An affordable, and easy to use, all-in-one appliance for small to medium enterprises.



SUMMARY

INDUSTRIAL STRENGTH EMAIL SECURITY

The *IronPort X1050* is the most sophisticated email security appliance available today. IronPort appliances are in production at eight of the ten largest ISPs and more than 20 percent of the world's largest enterprises. This system has a demonstrated record of unparalleled security and reliability.

By reducing the downtime associated with spam, viruses and a wide variety of other threats, the *IronPort X1050* enables the administration of complex corporate mail systems, reduces the burden on technical staff, and quickly pays for itself. It is the advanced technology within IronPort appliances that leads to the simplicity of management, and also the highest levels of security in the world. IronPort's email security appliances are carrier class offerings that can support and protect your email systems – not only from today's threats, but from those certain to evolve in the future.

CONTACT US

TRY BEFORE YOU BUY

Through a global salesforce and reseller network, IronPort offers a free “Try Before You Buy” program for the *IronPort X1050*. To learn if you qualify call 650-989-6530 or visit us on the Web at www.ironport.com/try



IronPort Systems, Inc.

950 Elm Avenue, San Bruno, CA 94066

TEL 650.989.6500 FAX 650.989.6543

EMAIL info@ironport.com WEB www.ironport.com

IronPort Systems is a leading provider of anti-spam, anti-virus and anti-spyware appliances for organizations ranging from small businesses to the Global 2000. IronPort appliances utilize SenderBase, the world's largest email and Web threat detection network and database. IronPort products are innovative and easy-to-use — providing breakthrough performance and playing a mission-critical role in a company's network infrastructure.

Copyright © 2007 IronPort Systems, Inc. All rights reserved. IronPort, the IronPort logo and SenderBase are registered trademarks of IronPort Systems, Inc. All other trademarks are the property of IronPort Systems, Inc. or their respective owners. While every effort is made to ensure the information given is accurate, IronPort does not accept liability for any errors or mistakes which may arise. Specifications and other information in this document may be subject to change without notice. P/N 435-0110-4 6/07

